

STATION 12 | Interpreting smaxtec data - sensor technology in dairy farming



Picture: <https://smaxtec.com>

The use of modern sensor technology is also well advanced in agriculture. The "smaXtec" system provides a variety of data (temperature, pH value, movement pattern, ...) via a sensor in the cow's reticulum, which significantly simplifies herd management, improves animal health and reduces production costs.

In a workshop before the competition, the technology will be presented and tested on the existing herd of dairy cows.

Detailed information at www.smaxtec.com

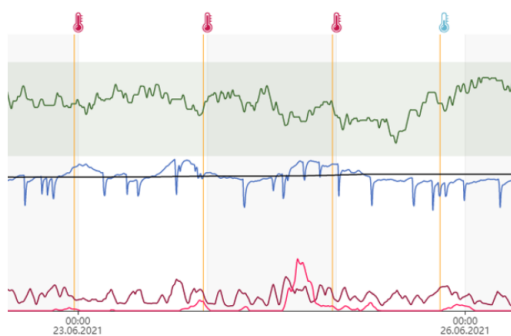


In the competition, questions about the status of individual cows (e.g. health, whether a cow is in heat or pregnant) have to be answered.

Examples of charts:

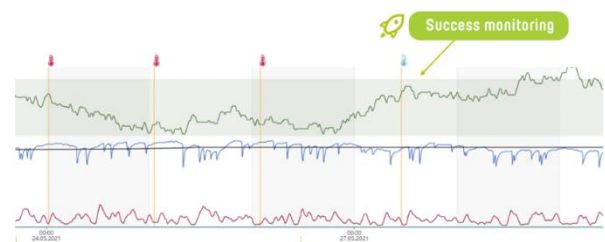
<https://smaxtec.com/en/overview-diseases/mastitis/>

<https://smaxtec.com/en/overview-diseases/disease-pneumonia/>



VIDEO: SMAXTEC MESSENGER TYPICAL COURSE OF MASTITIS CASE

Legend:
 Green curve: rumination
 Blue curve: inner body temperature
 Black line: average inner body temperature of the animal
 Red curve: activity levels
 Pink curve: Heat index
 Red thermometer: Increased temperature alarm
 Blue thermometer: Decreased temperature alarm



The cow did not show any signs of an illness from the outside. The vet was called anyway and started a treatment after diagnosing pneumonia.

Legend:
 Green curve: rumination
 Blue curve: inner body temperature
 Black line: average inner body temperature of the animal
 Red curve: activity levels
 Red thermometer: Increased temperature alarm
 Blue thermometer: Decreased temperature alarm